

SAILING INSTRUCTIONS

Translated from French by Sylvain Triquet

5 > 12 SEPTEMBRE 2009

DOSSIER PRESSE

7^{eme} ÉDITION

Tour
de Bretagne
à la Voile
avec Ouest-France

Crédit Mutuel
la banque à qui parler

ouest france

Région
BRETAGNE

www.tourdebretagnealavoile.com



LIGUE DE BRETAGNE
DE VOILE



SUMMARY

Article	N° de page
1 – Organizing authorities	3
2 - Rules	3
3 - Schedule	4
4 – Amendment to the race schedule and to the Sailing Instructions	4
5 – Ashore and afloat signals	4
6 – Committee Boat, organization boats	5
7 – Gauge and control	5
8 - Identification	5
9 : Number of persons onboard	5
10 - Radio and safety	6
11 – Start Procedure	6
12 - Recalls	6
13 - Course	6
14 – Protests and requests for redress	9
15 – Penalty system	9
16 - Scoring	10
17 – Limit times	10
18 - Retirement	10
19 - Advertising	10
20 - Replacement of equipment	10
SAMEDI 5 SEPTEMBRE - SAINT MALO / SAINT QUAY PORTRIEUX	12
DIMANCHE 6 SEPTEMBRE - SAINT QUAY PORTRIEUX / PERROS GUIREC	14
LUNDI 7 ET MARDI 8 SEPTEMBRE - PERROS GUIREC / BREST	17
MERCREDI 9 SEPTEMBRE – BREST / BREST	19
MERCREDI 9 SEPTEMBRE – BREST / BREST	19
JEUDI 10 SEPTEMBRE - BREST / PIRIAC SUR MER	21
SAMEDI 15 SEPTEMBRE – PIRIAC SUR MER / LA TRINITÉ	23

1 – Organizing authorities

The Tour de Bretagne à la voile is organized under the authority of the Ligue de Bretagne à la Voile, sponsored by Fédération Française de Voile in partnership with sailing clubs, city councils and local harbor authorities.

1.1 Organizing Committee :

Michel KERHOAS, chairman for the Ligue Bretagne de Voile

René BLANCHARD, Committee chairman

Jean COADOU, Race Committee chairman

Daniel THOMAS, Gauge Committee chairman

Gilles VAVASSEUR, Claim Committee chairman

Loïc PONCEAU, Race overseer

Bertrand NARDIN, General commissar

1.2 Race premises

The Racing Center, which location is mentioned in the appendices gathers :

- Race HQ
- Race secretariat
- Official notice board
- Jury premises (for claimings examination)
- Onshore flagpole

2 - Rules

2.1 Applicable rules

The event will be governed by all in force texts from the following documents:

- Rules as defined in the current *Racing Rules of Sailing*.

- Part B, section II from the RIPAM (COLREG) when replacing rules from chapter 2 of the RRS, between sunset (set on 8.30PM) and sunrise (set on 8AM).

- Federal rules

The Tour de Bretagne is a rank 3 when applying the Figaro Class Rules.

Figaro Bénéteau 2 class rules are modified as follows:

- 1) Article H.8.2 (Filling of the propeller shaft) will not apply.

Only the Sailing Instructions delivered on registration in St Malo are official. This translation of the Sailing Instructions is intended for foreign competitors information only. French version of the Sailing Instructions shall prevail in any case.

2.2 Amendments to the rules

Modified RRS in the present Sailing Instructions are : « Race Signals 29.2, 32, 33, 44, 61.1 (a), 62.2, 66, A4.2. ».

3 - Schedule

3.2 Briefing

A general information briefing will be held on Friday, September 4th, at 6PM in the Sablons marina's premises in St Malo.

3.3 Race schedule

Saturday 09/5th	Saint Malo / Saint Quay Portrieux	Warning signal: 11 H 00
Sunday 09/6th	Saint Quay Portrieux / Perros Guirec	Warning signal: 9 H 00
Monday 09/7th	Perros Guirec / Brest	Warning signal: 19 H 30
Wednesday 09/8th	Brest / Brest	Warning signal: 13 H 00
Thursday 09/9th	Brest / Piriac sur Mer	Warning signal: 8 H 00
Saturday 09/12th	Piriac sur Mer / La Trinité	Warning signal: 10 H 00

Shall the weather conditions impose it, the Race Committee might, at any time, set one or more triangular courses as defined in pages 20 and 21 of the present Sailing Instructions. Shall such a course be set, it will be announced by displaying a B flag, prior to the warning signal,.

NOTA: All indicated schedules in the present Sailing Instructions and displayed on the official board are expressed in local time (GMT + 2).

4 – Amendment to the race schedule and to the Sailing Instructions

Amendments modifying the Sailing Instructions will be displayed on the official board no later than 2 hours prior to the first race start. Their presence will be signaled by displaying an L flag on the onshore pole.

Their displaying holds for official notification to each contestant. Competitors are invited to check the official board prior to each race, until 2 hours before the scheduled start for the race. Any amendment to the schedule of the event shall be notified to competitors before 7PM the day before it applies or, shall it be delayed, 15 minutes after the latest limit time for protest and redress lodging for the day.

5 – Ashore and afloat signals

In complement or amendment to the race signals (cover page) of the 2009/2012 RRS.

5.1 Ashore

- "AP" : start is delayed, you are invited to stay onshore, warning signal shall not be displayed later than 30 minutes after removal of the AP flag.

5.2 Afloat

- « F » : series flag, used for warning signal (8mn)
 - « D » : displayed on the Committee boat prior to the start of a race indicates a clearing mark. (See 13.2.3)
 - « L » : when displayed by the Committee boat at the arrival of a race, indicates another race to be launched next.
 - « L » over « AP » displayed by the Committee boat, means : "Follow me to a new start area ". (See 13.1.1)
 - « 2nd substitute » outside of the start procedures, displayed by one of the organization boats next to a mark, indicates an official clocking being made by that boat. (See 13.1.5)
 - « AP » over « S » displayed by one of the organization boats indicates that the current race is stopped and the last official clocking will be taken into account for scoring. (See para 13.1.5).
- « **L over I** » : displayed by one of the organization boats, relayed by a sound signal, a VHF broadcast, and possibly a notice on the Committee Boat official board, indicates that « under rules 89.2 (c) of the RRS, amendments to the sailing Instructions are being given orally afloat. »

6 – Committee Boat, organization boats

The Committee Boat will display a purple colored flag.
Organization boats will display a « Voile Bretagne » flag.

7 – Gauge and control

Yachts shall comply with the in force Figaro Bénéteau 2 class rules (as amended in 2.1 of the present sailing instructions).
Punctual gauging and fittings controls may take place between races.
No boat shall be taken to dry land or grounded once leaving St Malo harbor, without prior authorization of the Race Committee.

8 - Identification

Sail number must match the one stated on the registration form, and comply with the Figaro Bénéteau 2 class rules (amending rule 77 and appendix G of the RRS).
When racing, competitors shall display, on their backstay, the race flag provided by the organization.
At all time, and most especially when arrival takes place at night or with low visibility, competitors must carry out any necessary procedure or means so as to be easily identified (lighting of the sail number, VHF or vocal confirmation...).

9 : Number of persons onboard

Each boat must hold a count of 2 persons onboard for the duration of each stage.

9.1 Change of crew

In case of illness, accident or peculiar reason that might lead to a change of a crew member, a written request shall be lodged with the Race Committee, who may demand a testimony or medical certificate.

10 - Radio and safety

VHF channel used by the Race Committee is channel 72.

Competitors shall keep a double watch on channels 16 and 72.

In case of accident (MayDay, Pan Pan or Sécurité) competitors shall apply standard procedures (channel 16 emergency call), or DSC.

Tour de Bretagne organizing staff encourage competitors to systematically use safety harnesses and buoyancy aids.

Prior to engaging in the night stage, we recommend that you get equipped with flashlights and check efficiency of your VHF, automatic lifebuoy self-righting light, and the charge of your battery.

11 – Start Procedure

11.1 Start signals

Class warning signal will be the « F » flag.

Races will be started by using rule 26 of the RRS.

<i>Time</i>	<i>Signal</i>	<i>Meaning</i>
8'	Display of class flag, combined with sound signal	Warning
4'	Display of P, I, Z+I or black flag, combined with a sound signal	Preparatory
1'	Removal of P, I, Z+I or black flag, combined with a sound signal	Last minute prior to start
0	Removal of class flag, combined with sound signal	Start

11.2 A boat starting later than eight minutes after starting signal will be scored DNS without a hearing.

11.3 Bearing and distance to the first race mark

Compass bearing and approximate distance to the first racing mark (or clearing buoy) shall be displayed, when possible, on the Committee Boat.

12 - Recalls

12.1 Recalls

Rule 29.2 of the RRS is amended as follows: after general recall, Race Committee might launch preparatory signal one minute after removal of the 1st substitute.

12.2 VHF announcement of anticipate starts

When possible, the Race Committee will indicate by means of VHF call, the sail numbers of concerned boats on race VHF channel; this at the very least two minutes after the race has been launched. The lack of VHF recall may not call for redress.

13 - Course

13.1 Commune stances

13.1.1 Start area

The starting area shall be designated in appendix of the present sailing instructions. Shall Race Committee be obliged to choose another start area, L over AP flags shall be displayed on the Committee Boat, meaning “Follow me to a new start area”.

Competitors must be in a position to get to this new area, even when the wind is null, where the Race Committee shall give an appropriate delay prior to launching a start procedure.

She shall display on an official board the number or name of the initial course’s mark that will become the new course’s first mark (possibly after the clearing buoy), the order of the following marks remaining unchanged.

13.1.2 Starting line

When not designed otherwise in the appendix, the starting line will be materialized by the course side of a striped yellow cylindrical buoy bearing a Guy Cotten marking, to be left on port; and the mast bearing an orange flag on the Race Committee boat, to be left on starboard. Shall a Jury Boat be moored in the extension of the start line, the starting mark is then constituted by the whole buoy, Jury Boat and the area that between them.

13.1.3 Change of the next leg of the course

In amendment with rules 32 and 33 of the RRS, Race Committee may, shall weather conditions or organization obligations and once the race has been launched, change the course on the marks designed in appendix. It is so commended to competitors to watch closely the surrounding areas when reaching these marks.

Change of course shall be signaled by the mark that initiates the new course as set by an Organization Boat:

- Displaying a “C” flag
- Issuing short sound signals to competitors passing the mark
- Displaying the appropriate bearing (Windward-leeward course) or next mark to be passed (coastal course)

Course change shall be issued before the leading boat has started this new leg of the course.

Shall the Committee Boat be moored, competitors shall, when coming from the last mark, pass between the mark initiating the new course and the Race Committee boat, becoming a new mark, leaving the mark and the boat to appropriate side.

13.1.4 Shortening of the course

Race Committee may, shall weather conditions or organization obligations and once the race has been launched, shorten the course after the starting of the race, and score the arrival on the marks designed in appendix (this amends rule 32 of the RRS). It is so commended to competitors to watch closely the surrounding areas when reaching these marks.

Committee Boat shall display, in addition to the blue flag an “S” flags. The finish line is then materialized by the course side of the mark, and the pole bearing the “S” flag on the Committee Boat

13.1.5 Validating of a race by means of official scoring on a mark

Race Committee may, shall weather conditions or organization obligations and once the race has been launched, validate a race by means of an official clocking at one of the marks described in appendix (in amendment to rule 32 of the RRS). It is so commended to competitors to watch closely the surrounding areas when reaching these marks.

In such a case, shall one of the Committee Boats displaying the 2nd substitute with the class flag (amendment to the race signals), holds by the course side of the mark, he carries out an

official clocking of competitors. The Committee Boat may emit repeated sound signals when competitors reach her.

Accordingly:

- 1 : Competitors must cross the line materialized by the mark and the referenced pole on the Committee Boat (this amends RRS 28).
- 2 : Competitors must remain on course.

If, thereafter, the Race Committee shall decide to stop the race, he will display both the « AP over S » and Class flags (modifying Race Signals), indicating :

“The race is stopped, the last official clocking will be taken into account for scoring. Any event subject to request happening after the crossing of this line shall not give way to protest, and no boat shall be given a penalty, except in consequence of any action concerning a fundamental ruling or RRS 69.”

Race Committee might confirm this by means of a VHF broadcast.

13.1.6 The finish

The finishing line is defined in course appendix.

In case of an arrival after sunset, the Committee boat shall have his mooring and deck lights on.

13.1.7 Buoys

Buoys used by the organization will be of cylindrical shape, yellow striped, displaying the “Guy Cotten” logo (any exception will be defined in the courses appendix).

Course change marks used for windward-leeward courses will be of cylindrical shape and yellow, and will be about 1m high.

13.2 Coastal course

13.2.1 Courses patterns

Courses for each stage are defined in appendix.

Geographical positions on the course charts given in the appendix are approximate positions of the course marks. They are purely indicative, and any mistake will not give way to protest.

All of the marks in the course charts in appendix are, if not indicated otherwise, marks to bypass.

13.2.2 Course identification

Shall the Race Committee have a choice between several courses as defined in the appendix for the stage, the numerical flag matching the course number will be displayed on the Race Committee boat prior to the display of the warning signal.

13.2.3 Clearing buoy

A clearing mark might be set about one nautical mile windward from the Race Committee boat (shall the Race Committee decide to increase or decrease this distance, it will be displayed on the Race Committee boat and broadcasted on VHF). Bearing to this mark might, when possible, indicated on the Race Committee boat. In such a case, the Race Committee boat shall display the “D” flag, prior to the warning signal, and the clearing shall be left :

- on starboard if the Race Committee boat displays a green flag combined with « D »
- on port, if the only flag displayed is « D »

In the lack of clearing buoy, the first mark of the course is to be left on the side according to the definition of the course.

13.2.4 Course marks

Competitors are invited to pay attention to the necessity of making sure, while passing a mark subject to indicate a change, shortening or official clocking (as given in appendix), that none of these procedure is under way.

13.3 Windward-leeward courses

Definitions of such courses are given in appendix.

14 – Protests and requests for redress

14.1 Time limit for protests

Protest and requests for redress are to be written on forms available at the Race office. They shall be delivered there within one and a half hour after the arrival of the protesting or requesting boat. However, any boat finishing between 8.00PM and 8.30AM the next day will have until 10.00AM for delivering his claim.

14.2 Protests from Race Committee or Protest Committee

Notice of protests by the Race Committee or the Protest Committee will be posted to inform boats under rule 61.1 (b) from the RRS.

14.3 Protests notice

Race Committee will display on the official board, as protests get logged in:

- a) sail number from the protesting boats alongside the sail numbers of boats involved in the protest.
- b) sail numbers from the boat shaving been lodged in by the Race Committee or Protest Committee as having breached a rule.
- c) schedules for hearings of the boats concerned in the protest room

14.4 – On the last scheduled day of racing, a request for reopening a hearing based on a protest committee decision shall be delivered:

- a. Within the protest time limit if the requesting party has been informed of the decision on the previous day;
- b. No later than 30 minutes after the requesting party has been informed of the decision on that day.

This amends rule 66.

14.5 – On the last day of racing, a request for redress based on a protest committee decision shall be delivered no later than 30 minutes after the decision was posted. This changes rule 62.2.

15 – Penalty system

15.1 Breach of a rule from chapter 2 of the RRS, or to a regulation from section B of the COLREG when replacing chapter 2 of the RRS:

Penalties defined in rules 44.1 and 44.2 of the RRS will be enforced -

15.2 Substitution penalties for breaching of rules other than the ones from chapter 2 of the RRS or to a regulation from section B of the COLREG when replacing chapter 2 of the RRS:

Breaching a rule other than 28 and 31 and to rules from chapter 2 or to a regulation from section B of the COLREG when replacing chapter 2 of the RRS shall, after hearing, be punished by a penalty that may go from 10% of the number of registered boats to disqualification.

In enforcement to rule 64.1 (a) of the RRS, disqualifications might be replaced by penalties. Such penalties will be calculated in percentage of the number of registered boats for the event, in application of rule 44.3 (c).

16 - Scoring

Scoring will be calculated in application of article 7 of the present sailing instructions:

- Low point system will apply
- Each race will bear a coefficient of 1
- No race shall be withdrawn
- Ranking will be calculated by added the points of each race.
- Parting of ties for general ranking shall be determined in application of appendix A 8 des R.C.V.

DNF, DNC, DNS, OCS, BFD, RAF, DSQ, DNE, DGM boats from a race shall be scored points for the finishing place one more than the number of boats entered in the series.

17 – Limit times

Limit time for finishing the course after the first boat sails and finishes the course, will be the total time of race of the first finishing boat plus 20% of that time.

Boats failing to finish within this limit will be scored DNF.

18 - Retirement

Any boat retiring from the race must remove his race flag and inform the Race Committee or the Race HQ ashore as soon as possible and by any means. He shall deliver notice of his retirement to the Race Office as soon as possible.

Any competitor failing to inform by any means the Race Committee or Race Q of his retirement may be disqualified from the entire event, depending on the Protest Committee's decision, notwithstanding any other disposition such as a report to his national authority or refusing him the right to enter an other event.

19 - Advertising

Competitors shall display advertising supplied by the organizing authorities as follows :

- Stickers on both sides of the genoa
- Sticker to be displayed on the rear beam
- Both dodgers in their port and starboard guardrails

Both these dodgers must remain correctly established for the duration of the event.

- The «Ligue de Bretagne de Voile» race flag, to be displayed at a height of about 1,60m to the axis of the backstay rigging screw
- In the stage harbors, in the upper part of their forestay, the « Région Bretagne » (upper), « Crédit Mutuel » (middle), « Ouest-France » (lower) flags. Those flags will be handed in St Malo upon registration.
- In the back part of the balcony, the crew board handed by the organization.

20 - Replacement of equipment

In compliance with the class rules. Those replacements are limited to damage judged beyond repair and on limited equipment. Decision relies on the Race Committee, after a possible hearing of the gauge officer.

21 - Liability

Competitors participate in the regatta at their own risks. Decision to start a race or remain on course relies on their own liability.

The organizing authority will not accept liability for material damage or personal injury or death sustained in conjunction with or prior to, during, or after the regatta.

22 – Trash disposal

Boats shall not put trash in the water. Trash must be kept onboard until landing of the crew.

ANNEXE PARCOURS

Avertissement :

L'ensemble des cartes marines figurant dans cette annexe ne peuvent servir d'instructions de course ou de document de navigation.

Les positions données sur les tableaux de parcours sont les positions approximatives des marques de parcours, une erreur dans celles ci ne peut donner lieu à réparation.

SAMEDI 5 SEPTEMBRE - SAINT MALO / SAINT QUAY PORTRIEUX

Situation du Centre de Course Départ : Salle du port de plaisance des Sablons

Briefing des concurrents : Vendredi 4 septembre à 18H dans la salle du port de Sablons

Heure du 1er signal d'avertissement : 11 H le samedi 5 septembre

Zone de Départ : Sud Ouest immédiat de la Cité d'Aleth

Ligne de départ : conforme à l'article 13.1.2 des IC

Parcours :

Segment	Seg. Dist	Dist. Totale	coté requis	WP Nom	WP Lat/Lon	Cap à Suivre
0	0.000 Mn	N/D	1	départ	48°38.1604 N / 002°02.1594 O	0 ° V
1	1.526 Mn	1.526 Mn	Bâbord	Les Burons	48°39.3230 N / 002°03.6545 O	320 ° V
2	1.817 Mn	3.34 Mn	Bâbord	les Courtis	48°40.4603 N / 002°05.8003 O	309 ° V
3	8.83 Mn	12.2 Mn	Bâbord	Cap Fréhel	48°41.3485 N / 002°19.1126 O	276 ° V
4	8.03 Mn	20.2 Mn	Bâbord	Les Landas	48°41.4282 N / 002°31.2826 O	271 ° V
5	8.59 Mn	28.8 Mn	Tribord	Caffa	48°37.8112 N / 002°43.0850 O	245 ° V
6	2.11 Mn	30.9 Mn	Tribord	la Roselière	48°37.2799 N / 002°46.1800 O	255 ° V
7	2.39 Mn	33.3 Mn	8	arrivée	48°38.8860 N / 002°48.8583 O	312 ° V

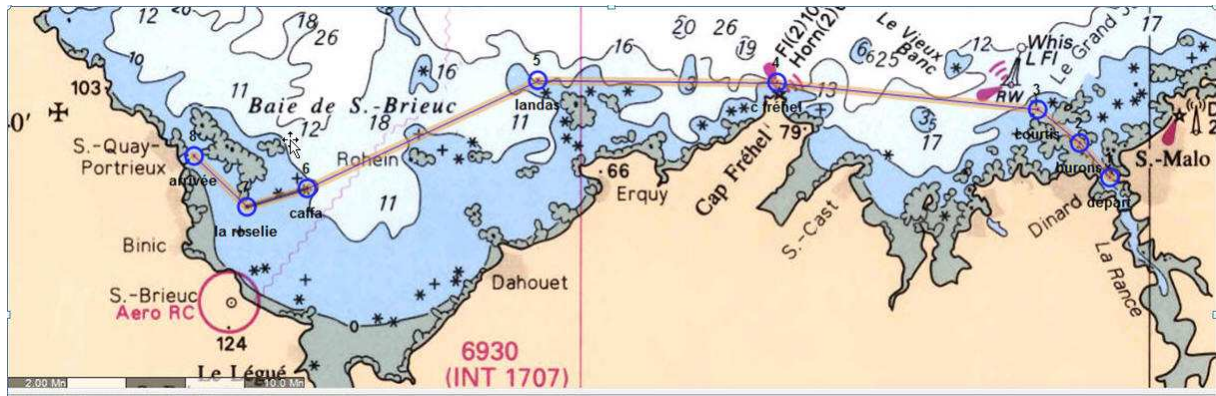
Marques où pourra être effectué un pointage officiel, réduit ou modifié le parcours :

«Les Landas », « La Roselière »

Ligne d'arrivée du parcours complet, situation et définition : Entre le mât portant un pavillon orange sur le bateau comité à laisser à tribord et le feu d'extrémité du mole Nord du port de plaisance de St Quay Portrieux.

Emplacement des bateaux après l'étape : Ponton 7

Situation du Centre de Course Arrivée : Près de la Capitainerie du port de plaisance de Saint Quay Portrieux



Proclamation des résultats de l'étape : à 20 H

DIMANCHE 6 SEPTEMBRE - SAINT QUAY PORTRIEUX / PERROS GUIREC

Situation du Centre de Course Départ : Près de la Capitainerie du port de plaisance de Saint Quay Portrieux

Heure du 1er signal d'avertissement : 9 H 00

Zone de Départ : Nord Ouest immédiat de la tourelle « Madeux »

Ligne de départ : conforme à l'article 13.1.2 des IC

Parcours 1

#Segment	Seg. Dist	Dist. Totale	Coté requis	WP Nom	WP Lat/Lon	Cap à Suiv.
0	0.000 Mn	N/D	1	Départ	48°40.0791 N / 002°49.4503 O	0 ° V
1	13.2 Mn	13.2 Mn	Bâbord	Men Marc'h	48°53.2105 N / 002°51.8793 O	353 ° V
2	2.47 Mn	15.7 Mn	Bâbord	Nord Horaine	48°54.4166 N / 002°55.1520 O	299 ° V
3	8.52 Mn	24.2 Mn	Bâbord	Jument des Héaux	48°55.3352 N / 003°08.0336 O	276 ° V
4	9.29 Mn	33.5 Mn	Tribord	Basse Guazer 1	48°51.5776 N / 003°20.9536 O	246 ° V
5	3.62 Mn	37.1 Mn	Tribord	Bouée Perros	48°49.1235 N / 003°25.0000 O	227 ° V
6	3.58 Mn	40.7 Mn	Tribord	Les Dervinis	48°52.3561 N / 003°27.3223 O	335 ° V
7	4.27 Mn	45.0 Mn	Tribord	Basse Guazer 2	48°51.6100 N / 003°20.9321 O	100 ° V
8	3.93 Mn	48.9 Mn	9	Arrivée	48°48.9235 N / 003°25.3000 O	227 ° V

La « Bouée Perros » ci dessus sera une bouée gonflable mouillée par l'organisation dans le SW immédiat de la tourelle « Pierre du Chenal »

Marques où pourra être effectué un pointage officiel, réduit ou modifié le parcours :
«Basse Guazer », « Bouée Perros », « Les Dervinis ».

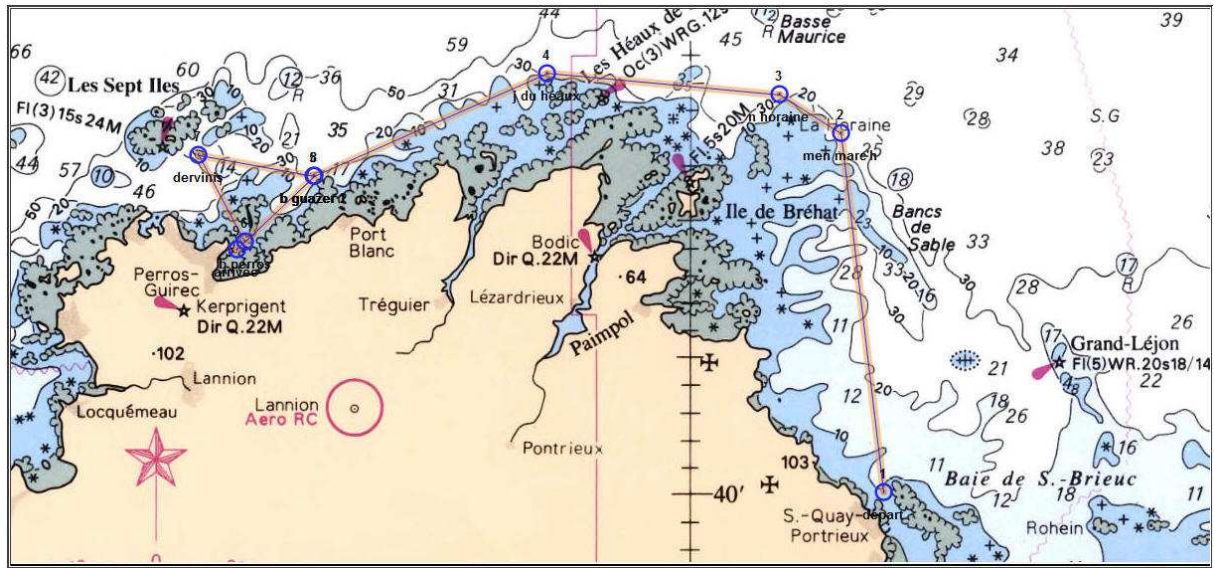
Ligne d'arrivée du parcours complet, situation et définition : dans le NW immédiat de la tourelle « Roc'h hu de Perros » entre le mât portant un pavillon orange sur le bateau comité à laisser à tribord et le coté parcours d'une bouée gonflable.

Ouverture de l'écluse du port de Perros-Guirec : de 18 H 30 à 22 H 10

Emplacement des bateaux après l'étape : Ponton « La Mutine »

Situation du Centre de Course Arrivée : Capitainerie du port de Perros-Guirec

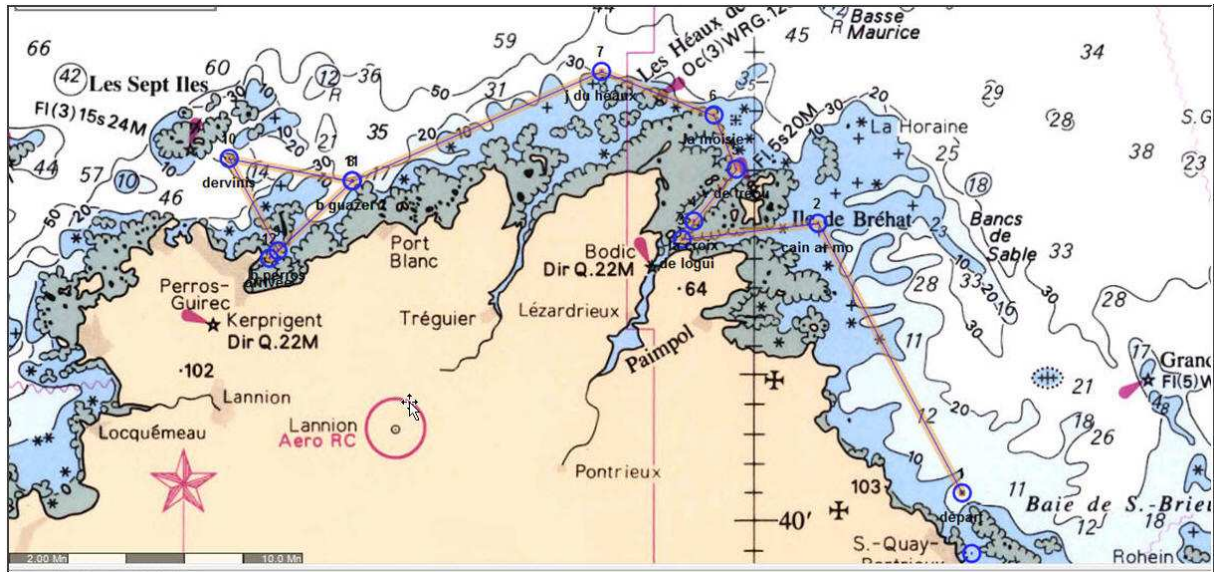
Proclamation des résultats de l'étape : 19 H



Parcours 2

#Segment	Seg. Dist	Dist. Totale	Coté Requis	WP Nom	WP Lat/Lon	Cap à Suivre.
0	0.000 Mn	N/D	1	départ	48°40.9633 N / 002°49.3611 O	0 ° V
1	10.4 Mn	10.4 Mn	Bâbord	Cain Ar Monse	48°50.1636 N / 002°56.8163 O	332 ° V
2	4.66 Mn	15.1 Mn	Tribord	Vieille de Loguivy	48°49.6177 N / 003°03.8407 O	263 ° V
3	0.727 Mn	15.8 Mn	Tribord	la Croix	48°50.2302 N / 003°03.2450 O	33 ° V
4	2.27 Mn	18.1 Mn	Bâbord	Vieille de Tréou	48°51.9891 N / 003°01.0701 O	39 ° V
5	1.989 Mn	20.1 Mn	Bâbord	la Moisie	48°53.8285 N / 003°02.2194 O	338 ° V
6	2.08 Mn	22.2 Mn	Bâbord	Les Héaux de Bréhat	48°54.8356 N / 003°04.9926 O	299 ° V
7	2.06 Mn	24.2 Mn	Bâbord	la Jument des Héaux	48°55.3335 N / 003°08.0353 O	284 ° V
8	9.28 Mn	33.5 Mn	Tribord	Basse Guazer 1	48°51.5643 N / 003°20.9381 O	246 ° V
9	3.64 Mn	37.1 Mn	Tribord	Bouée Perros	48°49.0999 N / 003°25.0000 O	227 ° V
10	3.60 Mn	40.7 Mn	Tribord	Les Dervinis	48°52.3561 N / 003°27.3223 O	335 ° V
11	4.28 Mn	45.0 Mn	Tribord	Basse Guazer 2	48°51.6077 N / 003°20.9145 O	100 ° V
12	3.96 Mn	49.0 Mn	13	arrivée	48°48.8999 N / 003°25.3000 O	227 ° V

La « Bouée Perros » ci dessus sera une bouée gonflable mouillée par l'organisation dans le SW immédiat de la tourelle « Pierre du Chenal »



Marques où pourra être effectué un pointage officiel, réduit ou modifié le parcours :
 «Basse Guazer », « Bouée Perros », « Les Dervinis ».

Ligne d'arrivée du parcours complet, situation et définition : dans le NW immédiat de la tourelle « Roc'h hu de Perros » entre le mât portant un pavillon orange sur le bateau comité à laisser à tribord et le coté parcours d'une bouée gonflable.

Ouverture de l'écluse du port de Perros-Guirec : de 18 H 30 à 22 H 10

Emplacement des bateaux après l'étape : Ponton « La Mutine »

Situation du Centre de Course Arrivée : Capitainerie du port de Perros-Guirec

Proclamation des résultats de l'étape : 19 H

LUNDI 7 ET MARDI 8 SEPTEMBRE - PERROS GUIREC / BREST

Situation du Centre de Course Départ : Capitainerie du port de Perros Guirec

Ouverture de l'écluse du port de Perros-Guirec : à partir de 19 H 00 le lundi 7 septembre

Heure du 1er signal d'avertissement : 19 H 30 le lundi 7 septembre

Zone de Départ : Dans le secteur de l'anse de Perros

Ligne de départ : conforme à l'article 13.1.2 des IC

Parcours :

#Segment	Seg. Dist	Dist. Totale	#WP	WP Nom	WP Lat/Lon	Cap à Suivre
0	0.000 Mn	N/D	1	départ	48°49.1546 N / 003°24.7337 O	0 ° V
1	1.090 Mn	1.09 Mn	bâbord	La Fronde	48°49.8777 N / 003°25.9730 O	312 ° V
2	1.844 Mn	2.93 Mn	bâbord	Pointe de Men Ru	48°50.3613 N / 003°28.6767 O	285 ° V
3	1.200 Mn	4.13 Mn	bâbord	Ile Renote	48°50.5355 N / 003°30.4808 O	278 ° V
4	21.0 Mn	25.2 Mn	bâbord	Ile de Batz	48°45.8306 N / 004°01.6254 O	257 ° V
5	30.7 Mn	55.9 Mn	bâbord	basse Portsall	48°36.7718 N / 004°46.0496 O	253 ° V
6	5.51 Mn	61.4 Mn	bâbord	Phare du Four	48°31.4532 N / 004°48.2366 O	195 ° V
7	5.10 Mn	66.5 Mn	bâbord	La Valbelle	48°26.4832 N / 004°49.9567 O	193 ° V
8	7.45 Mn	73.9 Mn	bâbord	Les Vieux Moines	48°19.3839 N / 004°46.5538 O	162 ° V
9	5.26 Mn	79.2 Mn	bâbord	SWansea Vale	48°18.2112 N / 004°38.8365 O	103 ° V
10	2.89 Mn	82.1 Mn	bâbord	Kerviniou	48°19.7205 N / 004°35.1251 O	59 ° V
11	0.777 Mn	82.9 Mn	bâbord	Mengam	48°20.1998 N / 004°34.2050 O	52 ° V
12	4.09 Mn	87.0 Mn	bâbord	Rade 2	48°22.0218 N / 004°28.6970 O	64 ° V
13	0.386 Mn	87.3 Mn	Tribord	Passe Sud	48°22.1390 N / 004°29.2509 O	288 ° V
14	0.418 Mn	87.8 Mn	15	Arrivée	48°22.5564 N / 004°29.2715 O	358 ° V

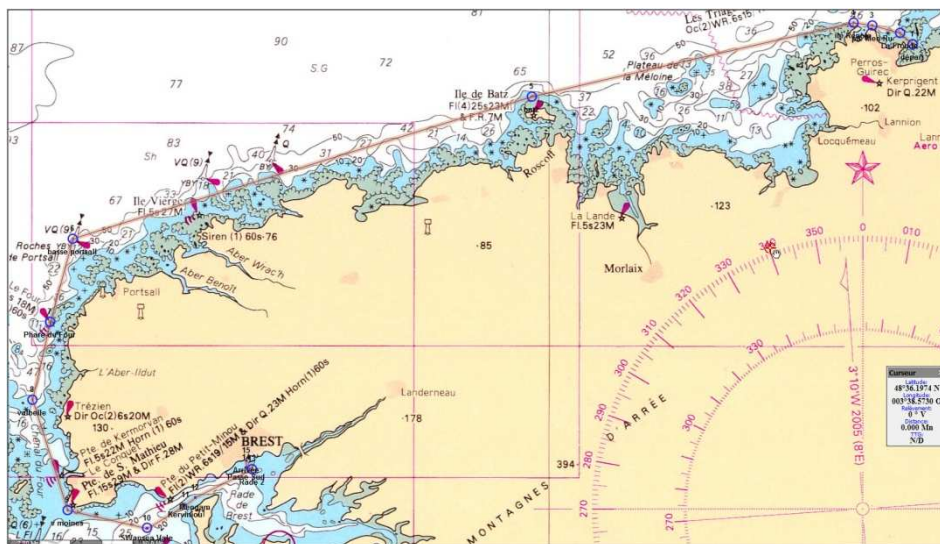
Marques où pourra être effectué un pointage officiel, réduit ou modifié le parcours :
« Grande Basse de Portsall » « La Valbelle » « les vieux Moines», « Swansea Vale »,
« Rade 2 ».

Ligne d'arrivée du parcours complet – situation et définition : à environ 0,3 M dans le Nord du feu tribord de la passe sud de la rade abri ; entre le mât portant un pavillon orange sur le bateau comité à laisser à tribord et le coté parcours d'une bouée gonflable. En cas d'arrivée de nuit, le bateau comité aura ses feux de mouillage et de pont allumés et la bouée sera, si possible, muni d'un flash-ligth

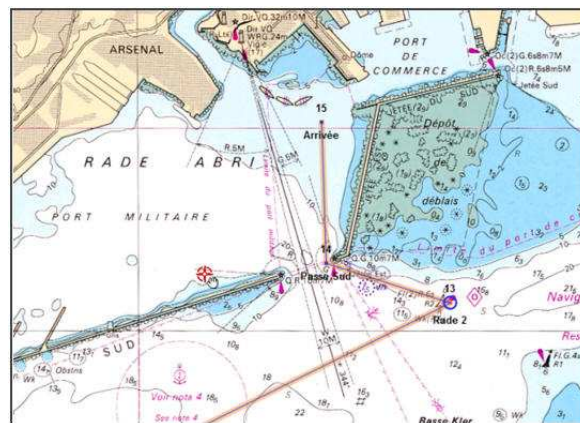
Emplacement des bateaux après l'étape : ponton La Pérouse, port du Château

Situation du Centre de Course Arrivée : bâtiment la Rotonde (terre plein du port)

Proclamation des résultats de l'étape et des parcours en rade: mercredi 9 à 19 H



Détail de l'arrivée à Brest



MERCREDI 9 SEPTEMBRE – BREST / BREST

DEUX PARCOURS BANANE A SUIVRE

La mise en place d'un parcours de ce type sera annoncée par l'envoi, avant le signal d'avertissement, du pavillon B sur le bateau comité.

Situation du Centre de Course Départ : bâtiment la Rotonde (terre plein du port)

Zone de Départ : Zone sous le vent d'un cercle d'environ 2 nautiques de diamètre en rade de Brest

Ligne de départ : Conformément aux Instructions de Course (art.13.1.2). Entre le côté parcours de la bouée «sous le vent» (3) et le mât portant un pavillon orange sur le Bateau Comité.

Heure du 1er signal d'avertissement : 13 H00, et à suivre, la première course du jour

Type de Parcours : Parcours Banane tel que défini ci-après (voir schéma).

Longueur approximative : 9 milles.

La distance entre la bouée 1 et la bouée 3 sera d'environ 2 milles.

La distance entre la bouée 1 et la bouée 2 sera d'environ 0,05 milles,

L'angle entre les bouées 2, 1, 3 sera compris entre 70° et 110°

Définition des marques :

Bouée du parcours : Bouée cylindrique jaune avec bande siglée du logo de la marque « Guy Cotten »

Bouée de 1er changement : Bouée cylindrique jaune (ht : environ 1m)

Bouée de 2ème changement : idem bouée initiale

Changement de parcours : Conformément aux Instructions de Course (art.13.1.3), de plus :

- Après un changement de parcours modifiant la position de la bouée 1, la bouée 2 ne sera pas remouillée et ne sera donc plus marque de parcours

Parcours Banane

NOM	COTE REQUIS
Départ	
Bouée 1	Bâbord
Bouée 2	Bâbord
Bouée 3	Bâbord
Bouée 1	Bâbord
Bouée 2	Bâbord
Bouée 3	Bâbord
Arrivée	

Marques où pourra être effectué un pointage officiel, réduit ou modifié le parcours :
toutes les marques

JEUDI 10 SEPTEMBRE - BREST / PIRIAC SUR MER

Situation du Centre de Course Départ : Bâtiment la Rotonde

Zone de Départ : Banc du Corbeau

Heure du 1er signal d'avertissement : 8 H 00

Ligne de départ : conforme à l'article 13.1.2 des IC

Parcours (longueur approximative 143 milles)

#Segment	Seg. Dist	Dist. Totale	#WP	WP Nom	WP Lat/Lon	Cap à Suivre.
0	0.000 Mn	N/D	1	DEPART	48°21.5897 N / 004°29.9621 O	0 ° V
1	3.26 Mn	3.26 Mn	Tribord	Mengam	48°19.9853 N / 004°34.2256 O	240 ° V
2	0.501 Mn	3.76 Mn	Tribord	Kerviniou	48°19.8050 N / 004°34.9294 O	249 ° V
3	3.02 Mn	6.77 Mn	Bâbord	SWANSEA VALE	48°18.3296 N / 004°38.8869 O	241 ° V
4	1.865 Mn	8.64 Mn	Tribord	LE POHEN	48°16.5029 N / 004°38.3254 O	168 ° V
5	14.9 Mn	23.6 Mn	Bâbord	LA PLATE	48°02.3638 N / 004°45.5780 O	199 ° V
6	22.1 Mn	45.7 Mn	Bâbord	CAP CAVAL	47°46.4727 N / 004°22.6723 O	136 ° V
7	77.3 Mn	123 Mn	Bâbord	SUD GUERANDE	47°08.8014 N / 002°42.7934 O	119 ° V
8	6.95 Mn	130 Mn	Tribord	Ouest basse Capella	47°15.7387 N / 002°43.3696 O	357 ° V
9	11.0 Mn	141 Mn	Tribord	EST DUMET	47°25.2306 N / 002°35.1994 O	30 ° V
10	2.19 Mn	143 Mn	11	ARRIVEE	47°23.9397 N / 002°32.5789 O	126 ° V

Marques où pourra être effectué un pointage officiel, réduit ou modifié le parcours :
« Ouest Basse Capella », « Basse Est Ile Dumet ».

Ligne d'arrivée du parcours complet – situation et définition : à environ 1 M dans le nord du port de Piriac sur Mer entre le mât portant un pavillon orange sur le bateau comité à laisser à tribord et le coté parcours d'une bouée gonflable.

En cas d'arrivée de nuit, le bateau comité aura ses feux de mouillage et de pont allumés et la bouée sera, si possible, muni d'un flash-ligth

Ouverture de l'écluse du port de Piriac sur Mer :

le vendredi 11 septembre de 5H 05 à 14 H 11 et de 17 H28 à 24 H

Attention ! Ces heures sont données pour un tirant d'eau de 1.5m et 1013 mb de pression atmosphérique

Situation du Centre de Course arrivée : Capitainerie du Port de Piriac sur mer

Proclamation des résultats de l'étape : 19h Salle du Meniscoul sur le port

SAMEDI 15 SEPTEMBRE – PIRIAC SUR MER / LA TRINITÉ

Situation du Centre de Course Départ :

Ouverture de l'écluse du port de Piriac sur Mer le samedi 12 septembre :de 5H45 à 15H35

Heure du 1er signal d'avertissement : 10 H 00.

Zone de Départ : à environ 1 Mille dans le nord du port de Piriac sur mer

Ligne de départ : Conformément aux Instructions de Course (art.13.1.2)

Parcours (longueur approximative : 37 milles) :

Marques où pourra être effectué un pointage officiel, réduit ou modifié le parcours :
« Sud Banc de Quiberon », « Le Grand Coin »

Ligne d'arrivée du parcours complet - situation - définition : Dans la passe du Sud de la rade de La Trinité entre le mât portant un pavillon orange sur le bateau comité à laisser à tribord et le coté parcours de la bouée latéral rouge « Petit Trého » à laisser à bâbord.

Emplacement des bateaux après l'étape : Ponton visiteur

Situation du Centre de Course arrivée : Club SNT

Proclamation des résultats : 19 H

#Segment	Seg. Dist	Dist. Totale	#WP	WP Nom	WP Lat/Lon	Cap à Suivre.
0	0.000 Mn	N/D	1	départ	47°24.3731 N / 002°33.0879 O	0 ° V
1	7.20 Mn	7.20 Mn	Bâbord	Bohen du Four	47°18.5279 N / 002°39.2918 O	216 ° V
2	9.10 Mn	16.3 Mn	Bâbord	locmariaquer	47°25.8236 N / 002°47.3342 O	323 ° V
3	6.07 Mn	22.4 Mn	Tribord	Er Rouzes	47°22.0209 N / 002°54.3276 O	231 ° V
4	1.386 Mn	23.8 Mn	Tribord	Men Ar Vag	47°21.3947 N / 002°56.1526 O	243 ° V
5	3.63 Mn	27.4 Mn	Tribord	Le Rouleau	47°23.6731 N / 003°00.3276 O	309 ° V
6	0.779 Mn	28.2 Mn	Bâbord	le Grand Coin	47°24.4464 N / 003°00.1941 O	7 ° V
7	3.87 Mn	32.0 Mn	Tribord	Sud Banc de Quiberon	47°28.0370 N / 003°02.3474 O	338 ° V
8	5.55 Mn	37.6 Mn	9	arrivée	47°33.4748 N / 003°00.7262 O	11 ° V

